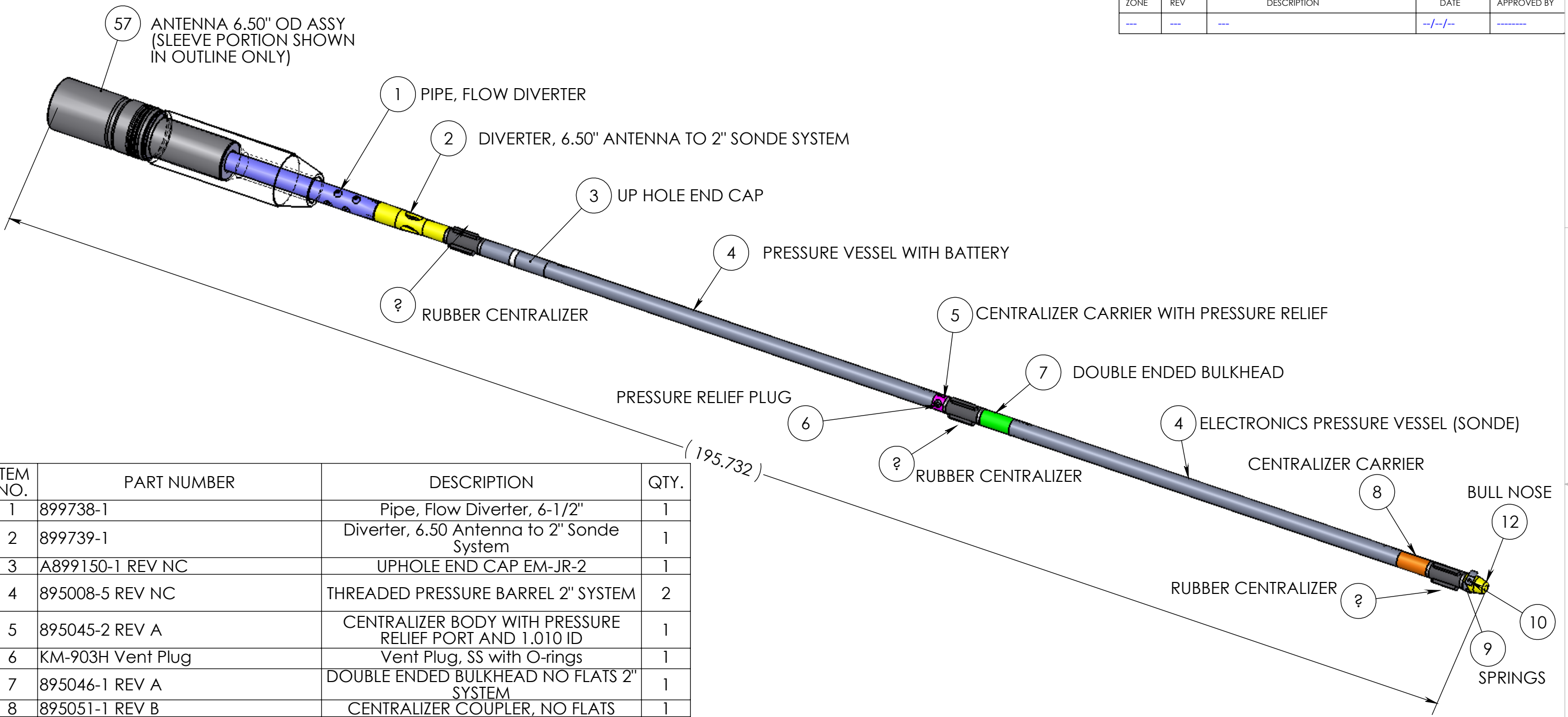


REVISIONS

ZONE	REV	DESCRIPTION	DATE	APPROVED BY
---	---	---	--/--/--	-----



ITEM NO.	PART NUMBER	DESCRIPTION	QTY.
1	899738-1	Pipe, Flow Diverter, 6-1/2"	1
2	899739-1	Diverter, 6.50 Antenna to 2" Sonde System	1
3	A899150-1 REV NC	UPHOLE END CAP EM-JR-2	1
4	895008-5 REV NC	THREADED PRESSURE BARREL 2" SYSTEM	2
5	895045-2 REV A	CENTRALIZER BODY WITH PRESSURE RELIEF PORT AND 1.010 ID	1
6	KM-903H Vent Plug	Vent Plug, SS with O-rings	1
7	895046-1 REV A	DOUBLE ENDED BULKHEAD NO FLATS 2" SYSTEM	1
8	895051-1 REV B	CENTRALIZER COUPLER, NO FLATS	1
9	895156 REV F Model	CIRCUMFERENTIAL SPRING	3
10	91735A827 Phillips Machine Screw	Phillips Machine Screw, Pan Head, 316 SS, 10-32 x 3/8" LONG	3
11	899050 REV A	CENTRALIZER, RUBBER 2" SYSTEM	3
12	898052 Rev B	Bottom Cap	1
57	899701-3a	6.5" Antenna Mandral with 2.8125" ID	1
58	899702-3A	SLEEVE, 6.5 ANTENNA, 3.25" ID BORE, 17-4 PH SS, THREADED	1

**PROPRIETARY AND CONFIDENTIAL**  
 THE INFORMATION CONTAINED IN THIS DRAWING IS THE SOLE PROPERTY OF **BOREGYDE, INC.**. ANY REPRODUCTION IN PART OR AS A WHOLE WITHOUT THE WRITTEN PERMISSION OF **BOREGYDE, INC.**, 673 E. COCHRAN ST., SIMI VALLEY, CA. IS PROHIBITED.

UNLESS OTHERWISE SPECIFIED:		NAME	DATE
DIMENSIONS ARE IN INCHES		DRAWN	M. Keller 12/03/08
TOLERANCES:		CHECKED	BEM 12/03/08
FRACTIONAL ± 1/64		ENG APPR.	JDH 12/03/08
ANGULAR: MACH ± 2°		MFG APPR.	BEM 12/03/08
BEND ± 2°		Q.A.	
TWO PLACE DECIMAL ± .005		COMMENTS:	
THREE PLACE DECIMAL ± .002		SolidWorks 2007	
INTERPRET GEOMETRIC TOLERANCING PER:			
MATERIAL			
FINISH			
NEXT ASSY	USED ON		
APPLICATION		DO NOT SCALE DRAWING	

**BOREGYDE, INC.**

TITLE:  
**ARC-GYDE 131P - 10W Downhole System**

SIZE <b>B</b>	DWG. NO. <b>898010-6</b>	REV <b>NC</b>
---------------	--------------------------	---------------

SCALE: NONE    WEIGHT: --    SHEET 1 OF 1